

1011100110010001101001011  
1010110010000100000010010  
3110100101110011011101000  
1010001110101011100110110  
1001101111011101010110110  
1101110011010010110111001  
310001000000110000101110  
3000010100000101001001011  
3100010101001101010010010  
3110101101001011011100110  
3101101110011001100110111  
1101011011001010111001101  
1000011011110110111000100  
1011000010110110001101110  
1011100110111001100001011  
1010110110001101001011010  
1010110000100000011010110  
3000101110011011000010110  
3101110100011001010110010  
1110101011101000110000101  
1011100110010001101001011  
1010110010000100000010010  
311010010110011011101000  
1010001110101011100110110  
1001101111011101010110110  
1101110011010010110111001  
110000100000110000111110  
1000101000001010101011  
110001010100110110000011  
1110101101001011011100110  
3101101110011001100110111  
1101011011001010111001101  
3000011011110110111000100  
1011000010110110001101110  
1011100110111001100001011  
1010110110001101001011010  
3010110000100000011010110  
3000100000100000011010110  
3000100000100000011010110  
3101101101101000110000101  
3010011100100110000101101  
1011101010110110101101100

# Keskkonnaministeriumi valitsemisala IKT strateegia

Marko Arula, KEMIT  
30.08.2019

1101101110011001100110111  
1101011011001010111001101  
3000011011110110111000100  
1011000010110110001101110  
1011100110111001100001011  
1010110110001101001011010  
3010110000100000011010110  
3010110000100000011010110  
3000100000100000011010110  
3101101101101000110000101  
1110101011101000110000101  
3010011100100110000101101  
1011101010110110101101100

# VALITSEMISALA STRATEEGILISED EESMÄRGID

1011100110010001101001011  
1010110010000100000010010  
3110100101110011011101000  
3010001110101011100110110  
1001101111011101010110110  
110111001101001010111001  
3100001000000110000101110  
3000010100000101001001011  
310001010001101010010010  
311010110100101011100110  
3101101110011001100110111  
1101011011001010111001101  
3000011011110110111000100  
1011000010110110001101110  
1011100110111001100001011  
3010110110001101001011010  
3010110000100000011010110  
3000101110011011000010110  
3101110100011001010110010  
1110101011101000110000101  
3010011100100110000101101  
1011101010110110101101100  
1011100110010001101001011  
1010110010000100000010010  
3110100101110011011101000  
3010001110101011100110110  
100110111011101010110110  
1101110011010010110111001  
3100001000000110000101110  
3000010100000101001001011  
31000101001101010010010  
3110101101001011011100110  
3101101110011001100110111  
1101011011001010111001101  
3000011011110110111000100  
1011000010110110001101110  
1011100110111001100001011  
3010110110001101001011010  
3010110000100000011010110  
3000101100000011010110  
31011011101100110000101  
1110101011101000110000101  
3010011100100110000101101  
1011101010110110101101100

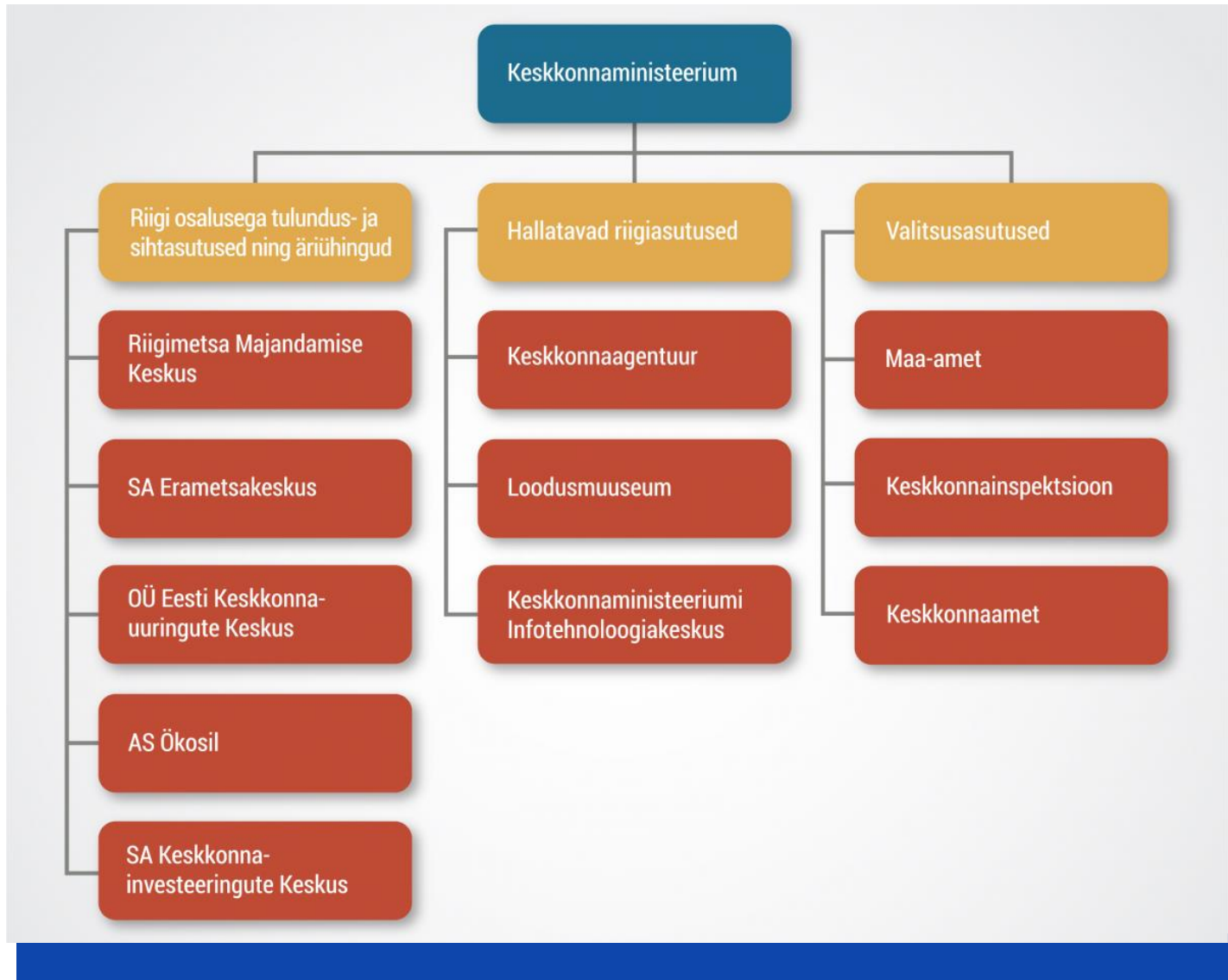
Vastutustundliku suhtumise kujundamine loodusesse ning Eesti inimestele puhta ja looduslikult mitmekesise elukeskkonna tagamine

Tagatud on keskkonna ja elurikkuse kaitse

Tagatud on jätkusuutlik ja tõhus keskkonnakasutus

Organisatsiooni juhtimine on efektiivselt korraldatud ja ressursse kasutatakse optimaalselt

1011100110010001101001011  
1010110010000100000010010  
3110100101110011011101000  
3010001110101011100110110  
1001101111011101010110110  
1101110011010010110111001  
3100001000000110000101110  
3000010100000101001001011  
310001010001101010010010  
3110101101001011011100110  
3101101110011001100110111  
1101011011001010111001101  
3000011011110110111000100  
1011000010110110001101110  
1011100110111001100001011  
3010110110001101001011010  
3010110000100000011010110  
3000101110011011000010110  
3101110100011001010110010  
1110101011101000110000101  
3010011100100110000101101  
1011101010110110101101100  
1011100110010001101001011  
1010110010000100000010010  
3110100101110011011101000  
3010001110101011100110110  
1001101111011101010110110  
1101110011010010110111001  
3100001000000110000101110  
3000010100000101001001011  
31000101001101010010010  
3110101101001011011100110  
3101101110011001100110111  
1101011011001010111001101  
3000011011110110111000100  
1011000010110110001101110  
1011100110111001100001011  
3010110110001101001011010  
3010110000100000011010110  
3000101100000000000000000  
3101101100000000000000000  
1110101011101000110000101  
3010011100100110000101101  
1011101010110110101101100



# Valitsemisala IT põhimõtted

1011100110010001101001011  
1010110010000100000010010  
3110100101110011011101000  
3010001110101011100110110  
100110111011101010110110  
1101110011010010110111001  
3100001000000110000101110  
3000010100000101001001011  
3100010101001101010010010  
3110101101001011011100110  
3101101110011001100110111  
1101011011001010111001101  
3000011011110110111000100  
1011000010110110001101110  
1011100110111001100001011  
3010110110001101001011010  
3010110000100000011010110  
3000101110011011000010110  
3101110100011001010110010  
1110101011101000110000101  
3010011100100110000101101  
10111010110110101101100  
1011100110010001101001011  
1010110010000100000010010  
3110100101110011011101000  
3010001110101011100110110  
100110111011101010110110  
1101110011010010110111001  
3100001000000110000101110  
3000010100000101001001011  
3100010101001101010010010  
3110101101001011011100110  
3101101110011001100110111  
1101011011001010111001101  
3000011011110110111000100  
1011000010110110001101110  
1011100110111001100001011  
3010110110001101001011010  
3010110000100000011010110  
3000101100110011001100110  
3101101011101000110000101  
3010011100100110000101101  
101110101110110101101100

- Neli peamist suurte andmemahutude valdkonda, kus peame olema tehnoloogiliselt eeskujulikul tasemel
  - Geomaatika (st ruumiandmed, kartograafia, geodeesia, maaressursside ja kinnisvara planeerimine, aadressid jms)
  - Satelliidiandmete jaotuskeskus, töötlemine
  - Ilmateenistus
  - Keskkonnaseisundi seire
- Andmeanalüütika peab kõik meie andmed siduma
- Korrastame andmete arhitektuuri ja süsteemidevahelised seosed

# Valitsemisala IT põhimõtted

1011100110010001101001011  
1010110010000100000010010  
3110100101110011011101000  
3010001110101011100110110  
1001101111011101010110110  
1101110011010010110111001  
3100001000000110000101110  
3000010100000101001001011  
310001010001101010010010  
3110101101001011011100110  
3101101110011001100110111  
1101011011001010111001101  
300001101110110111000100  
1011000010110110001101110  
1011100110111001100001011  
3010110110001101001011010  
3010110000100000011010110  
30001011100110110000010110  
3101110100011001010110010  
1110101011101000110000101  
3010011100100110000101101  
1011101010110110101101100  
1011100110010001101001011  
1010110010000100000010010  
3110100101110011011101000  
3010001110101011100110110  
1001101111011101010110110  
1101110011010010110111001  
3100001000000110000101110  
3000010100000101001001011  
31000101001101010010010  
3110101101001011011100110  
3101101110011001100110111  
1101011011001010111001101  
3000011011110110111000100  
1011000010110110001101110  
1011100110111001100001011  
3010110110001101001011010  
3010110000100000011010110  
30001011000000011010110  
3101101011101000110000101  
3010011100100110000101101  
1011101011101101101101100

- *Cloud first*
- Ühtki uut teenust ei looda alates 2020 töötama ainult on-premise tingimustes
- Oma riistvara hangime vaid mõjuvatel põhjustel (opex-raha puudus, nõutav spetsiifiline riistvara)
- DevOps põhimõtete rakendamine (automatiseerimine, autonoomsed tiimid)
- Grupi- ja kaugtöövõimekus peab kasvama
- Turvalisuse jätkuv tagamine
- Kasutajapõhine UI/UX

1011100110010001101001011  
1010110010000100000010010  
3110100101110011011101000  
3010001110101011100110110  
1001101111011101010110110  
1101110011010010110111001  
3100001000000110000101110  
3000010100000101001001011  
310001010001101010010010  
3110101101001011011100110  
3101101110011001100110111  
1101011011001010111001101  
3000011011110110111000100  
1011000010110110001101110  
1011100110111001100001011  
3010110110001101001011010  
3010110000100000011010110  
3000101110011011000010110  
3101110100011001010110010  
1110101011101000110000101  
3010011100100110000101101  
10111010110110101101100  
1011100110010001101001011  
1010110010000100000010010  
3110100101110011011101000  
3010001110101011100110110  
1001101111011101010110110  
1101110011010010110111001  
3100001000000110000101110  
3000010100000101001001011  
310001010001101010010010  
3110101101001011011100110  
3101101110011001100110111  
1101011011001010111001101  
3000011011110110111000100  
1011000010110110001101110  
1011100110111001100001011  
3010110110001101001011010  
3010110000100000011010110  
300010110110110110110110  
310110110110110110110110  
1110101011101000110000101  
3010011100100110000101101  
1011101010110110101101100

- Oma serveriruumidest vabanemine
- Geinfosüsteemide arhitektuuri uuendamine
- Andmehaldusvaldkonna (BI) käivitamine
- Teenuste üleviimine pilvelahendustesse
- Prioriteetseteks nimetatud tarkvaraarendusprojektide teostamine

# PRIORITEETSED TARKVARAPROJEKTID

1011100110010001101001011  
1010110010000100000010010  
3110100101110011011101000  
3010001110101011100110110  
1001101111011101010110110  
1101110011010010110111001  
3100001000000110000101110  
3000010100000101001001011  
3100010101001101010010010  
3110101101001011011100110  
3101101110011001100110111  
1101011011001010111001101  
3000011011110110111000100  
1011000010110110001101110  
1011100110111001100001011  
3010110110001101001011010  
3010110000100000011010110  
3000101110011011000010110  
3101110100011001010110010  
1110101011101000110000101  
3010011100100110000101101  
1011101010110110101101100  
1011100110010001101001011  
1010110010000100000010010  
3110100101110011011101000  
3010001110101011100110110  
1001101111011101010110110  
1101110011010010110111001  
3100001000000110000101110  
3000010100000101001001011  
3100010101001101010010010  
3110101101001011011100110  
3101101110011001100110111  
1101011011001010111001101  
3000011011110110111000100  
1011000010110110001101110  
1011100110111001100001011  
3010110110001101001011010  
3010110000100000011010110  
300010110110110110110110  
3101101110110110110110110  
1110101011101000110000101  
3010011100100110000101101  
1011101010110110101101100

- ANDMELADU
- E-KATASTER
- KESKKONNAANDMETE ANDMEKOGU (EELIS)
- KESKKONNA-REGISTER / -PORTAAL
- KOTKAS

- GEOPORTAAL
- MAAOKSJON
- INSPIRE
- ESTHUB
- METSAREGISTER
- DHS KIRKE
- FOKA
- OKAS

# INNOVATSIOONIPROJEKTID

- Ärilises mõttes revolutsioonilisi projekte pole
  - EstHubi peale on loodud/loomisel esimesed teenused (Jääkaart, Metsa kaugseire)
- On projekte, kus võtame kasutusele meie jaoks uusi tehnoloogiaid
  - Konteinerlahendused (Docker, Kubernetes jne)
  - IoT (droonide ja rajakaamerate) kasutamine järelevalves ja seires
  - Liitreaalsuse prototüüp Kitsenduste infosüsteemis

1011100110010001101001011  
1010110010000100000010010  
3110100101110011011101000  
3010001110101011100110110  
1001101111011101010110110  
1101110011010010110111001  
3100001000000110000101110  
3000010100000101001001011  
3100010101001101010010010  
3110101101001011011100110  
3101101110011001100110111  
1101011011001010111001101  
3000011011110110111000100  
1011000010110110001101110  
1011100110111001100001011  
3010110110001101001011010  
3010110000100000011010110  
3000101110011011000010110  
3101110100011001010110010  
1110101011101000110000101  
3010011100100110000101101  
1011101010110110101101100  
1011100110010001101001011  
1010110010000100000010010  
3110100101110011011101000  
3010001110101011100110110  
1001101111011101010110110  
1101110011010010110111001  
3100001000000110000101110  
3000010100000101001001011  
3100010101001101010010010  
3110101101001011011100110  
3101101110011001100110111  
1101011011001010111001101  
3000011011110110111000100  
1011000010110110001101110  
1011100110111001100001011  
3010110110001101001011010  
3010110000100000011010110  
300010110110110110110110  
3101101110110110110110110  
1110101011101000110000101  
3010011100100110000101101  
1011101010110110101101100



# SUURIMAD VÄLJAKUTSED

1011100110010001101001011  
1010110010000100000010010  
3110100101110011011101000  
3010001110101011100110110  
1001101111011101010110110  
1101110011010010110111001  
3100001000000110000101110  
3000010100000101001001011  
310001010001101010010010  
3110101101001011011100110  
3101101110011001100110111  
1101011011001010111001101  
3000011011110110111000100  
1011000010110110001101110  
1011100110111001100001011  
3010110110001101001011010  
30101100000100000011010110  
30001011100110110000010110  
3101110100011001010110010  
1110101011101000110000101  
3010011100100110000101101  
1011101010110110101101100  
1011100110010001101001011  
1010110010000100000010010  
3110100101110011011101000  
3010001110101011100110110  
1001101111011101010110110  
1101110011010010110111001  
3100001000000110000101110  
3000010100000101001001011  
310001010001101010010010  
3110101101001011011100110  
3101101110011001100110111  
1101011011001010111001101  
3000011011110110111000100  
1011000010110110001101110  
1011100110111001100001011  
3010110110001101001011010  
3010110000100000011010110  
3000101100000011010110  
3101101110011001100110110  
1110101011101000110000101  
3010011100100110000101101  
1011101010110110101101100

- Toimetulek väheste ressurssidega (inimesed, raha)
- Teenuste viimine pilve (erinevad tasemed)
- Geoinfosüsteemide arhitektuuri ja vahendite kaasajastamine; sh *vendor-lock*'i murdmine
- DevOps mõtteviisi levitamine ja rakendamine
- Ärivaldkondlike tiimide loomine (jätkamine)
- KEMITi organisatsioonistruktuuri muutmine ärile vastavaks
- Innovatsioonikultuuri toetamine ja süvendamine



KeMIT.ee